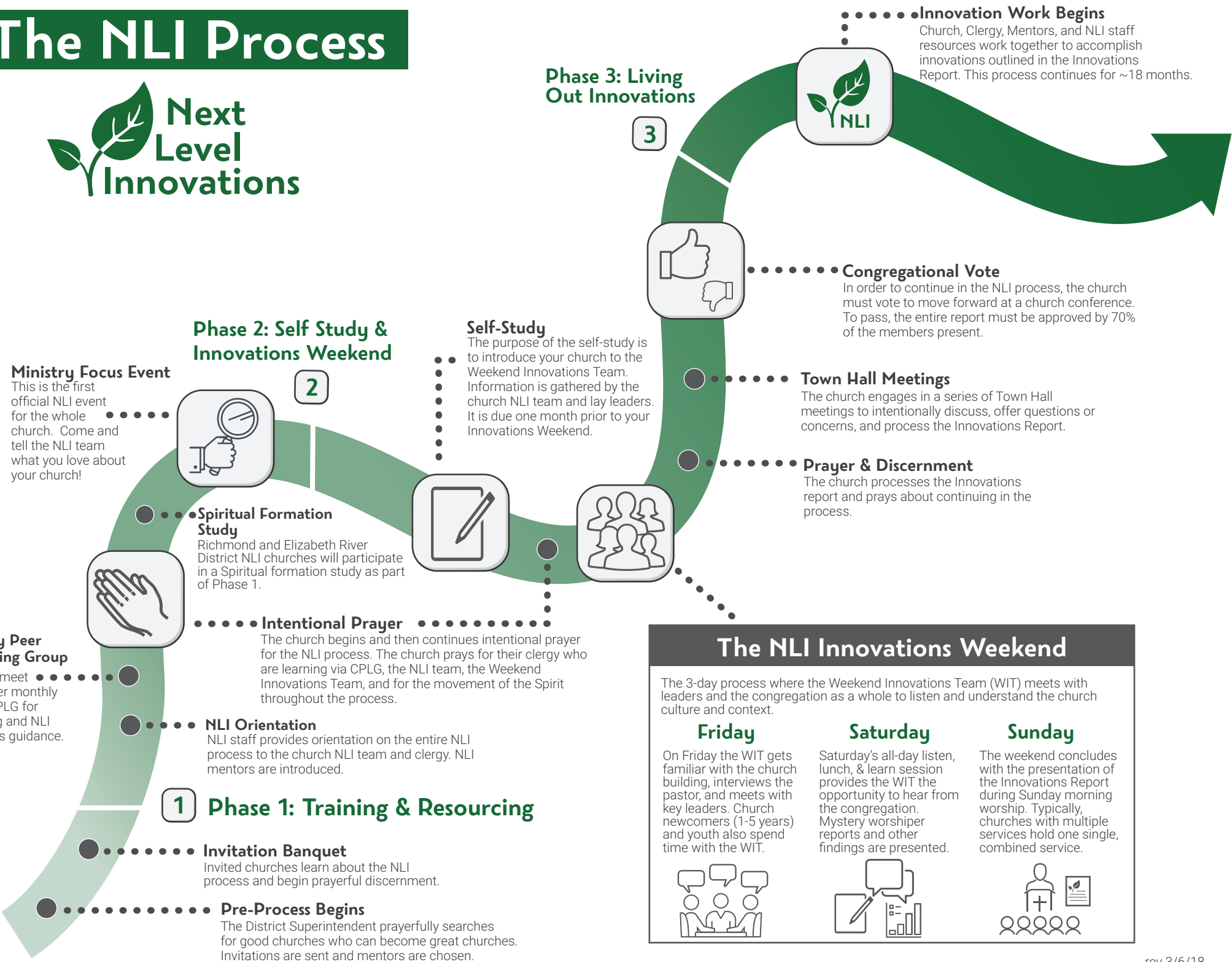


# The NLI Process



## 1 Phase 1: Training & Resourcing

### Ministry Focus Event

This is the first official NLI event for the whole church. Come and tell the NLI team what you love about your church!

### Clergy Peer Learning Group

Clergy meet together monthly as a CPLG for training and NLI process guidance.

## 2 Phase 2: Self Study & Innovations Weekend



### Spiritual Formation Study

Richmond and Elizabeth River District NLI churches will participate in a Spiritual formation study as part of Phase 1.

### Intentional Prayer

The church begins and then continues intentional prayer for the NLI process. The church prays for their clergy who are learning via CPLG, the NLI team, the Weekend Innovations Team, and for the movement of the Spirit throughout the process.

### NLI Orientation

NLI staff provides orientation on the entire NLI process to the church NLI team and clergy. NLI mentors are introduced.

### Invitation Banquet

Invited churches learn about the NLI process and begin prayerful discernment.

### Pre-Process Begins

The District Superintendent prayerfully searches for good churches who can become great churches. Invitations are sent and mentors are chosen.



### Self-Study

The purpose of the self-study is to introduce your church to the Weekend Innovations Team. Information is gathered by the church NLI team and lay leaders. It is due one month prior to your Innovations Weekend.

## 3 Phase 3: Living Out Innovations

3



### Congregational Vote

In order to continue in the NLI process, the church must vote to move forward at a church conference. To pass, the entire report must be approved by 70% of the members present.

### Town Hall Meetings

The church engages in a series of Town Hall meetings to intentionally discuss, offer questions or concerns, and process the Innovations Report.

### Prayer & Discernment

The church processes the Innovations report and prays about continuing in the process.



### Innovation Work Begins

Church, Clergy, Mentors, and NLI staff resources work together to accomplish innovations outlined in the Innovations Report. This process continues for ~18 months.

## The NLI Innovations Weekend

The 3-day process where the Weekend Innovations Team (WIT) meets with leaders and the congregation as a whole to listen and understand the church culture and context.

Friday	Saturday	Sunday
On Friday the WIT gets familiar with the church building, interviews the pastor, and meets with key leaders. Church newcomers (1-5 years) and youth also spend time with the WIT.	Saturday's all-day listen, lunch, & learn session provides the WIT the opportunity to hear from the congregation. Mystery worshiper reports and other findings are presented.	The weekend concludes with the presentation of the Innovations Report during Sunday morning worship. Typically, churches with multiple reports and other services hold one single, combined service.